

Mark Your Calendar

Section Meetings

August 23, 2012
 September 27, 2012
 October 25, 2012
 November 29, 2012
 January 24, 2013
 February 28, 2013
 March 28, 2013
 April 25, 2013
 May 23, 2013

Workshops/Exams

October 5 & 12, 2012
 (Tentative)
 CCC/CCE Workshop
 December 8, 2012
 Certification Exam
 (Final Registration – 9/5/12)

Community Events

September 6, 2012
 College Night
 TBA
 Future City Competition

Social Events

October 25, 2012
 Membership Drive
 November 29, 2012
 Annual Member Appreciation

Member Spotlight



This month, we spotlight two of our SRR members. Meet Ginger Glass (left), BCP Manager, and Ashley Flowers (right), the Summer Intern, for Project Controls.



this issue

President's Welcome **P.1**
 Speaker Highlights **P.2**
 Vogtle & Journal Spotlight **P.3**
 Workshop Information **P.4**

Welcome 2012-2013 AACEI-CSRA Members!

The CSRA Section's meeting calendar has been set for the 2012 to 2013. We will continue to meet the fourth Thursday of the Month. The meeting dates are as follows: August 23rd, September 27th, October 25th (Membership Drive), November 29th (Annual Members Appreciation Dinner), January 24th, February 28th, March 28th, April 25th, and May 23rd. Mark your calendars and plan to attend. If you know of someone who would make a good speaker, please let Tandra Craven know at tandra.craven@srs.gov.

The October Dinner Meeting will be a Membership Drive Kick-off. If you are not a current AACE Member, this is a great time to think about joining and get 3 months for free. Annual dues cover January through December and those joining in October will not pay dues again for 15-months. The benefits of AACE membership are many including networking opportunities with other cost engineering professionals, access to new and leading edge information, discounted fees for AACE certification exams, and an easy way to claim recertification points for both AACE and PMI certifications.

The CSRA Section will again this year be represented at the CSRA College Night on September 6th. We need volunteers to help set-up, work, and take down our display booth. If you are interested in volunteering, contact Brandon.mcbride@srs.gov.

Have you done something noteworthy? If so, share your success with your colleagues by sending a brief description to Sarah Mazul (sarah.mazul@srs.gov) for inclusion in the monthly newsletter.

Beginning January 2013, all AACE certification exams will be computer based. These exams will be administered by an outside testing company and AACE certified individuals will no longer be needed to proctor certification exams.

The Section will be offering AACE CCE / CCC exam workshops in the month of October. If you don't currently hold an AACE certification, but have thought about sitting for the exam, then this might be the time to do so. Professional certifications offer you an opportunity to enhance your professional credibility, validate your knowledge of cost engineering, verify that you are dedicated to improving your cost engineering skills, and distinguish yourself as a cost engineering professional. The workshops will help to prepare you to sit for and pass the certification exams. If you currently hold an EVP, PSP, and/or CCC/CCE certification, the Section is looking for volunteers interested in presenting during these workshops. This is an easy way to collect recertification points and offers you a chance to sharpen your skills while giving back to the Cost Engineering profession.

Recap: Building a Culture of Innovation and Collaboration

During the last meeting of our 2011-2012 AACEL-CSRA year, we had the opportunity to hear from Dr. Anthony Robinson from the Hull College of Business at Augusta State University.

Dr. Robinson had provided the following summary of his presentation:

"While our region has much of which to be proud, we can make considerable advancements by building a regional brand. Focusing on and building upon a couple of strategic competitive advantages helps us to move forward as we seek to build a stronger knowledge-based economy. Among our assets are the following: health & wellness, and science & technology. Committing resources to build upon our strengths in health and wellness allow us to leverage regional assets in fast growing profitable sectors. Focusing on science and technology also allows us to build on those things we do well and can leverage on a larger economic scale. Together, these areas create an incredible opportunity to advance our economy while building a brand for this region.

I am happy to offer insights on innovative efforts in the region."

Look forward to seeing more about his efforts in the South Eastern Innovation Festival & Hackathon soon. He and his associates are working hard to make it a success in the CSRA.



Laney-Walker /Bethlehem Revitalization Project

Elmyria Chivers
Meybohm Realty
Vice President, Realtor

Elmyria Boyd Chivers was born the 12th child to the late Roger and Hattie Lewis Boyd. Raised and educated in McDuffie County, she is a graduate of Thompson High School. She attended Fort Valley

State College and received a Bachelor of Science Degree. She then taught school in McDuffie, Jefferson, and Richmond County for a total of 7 years.

Upon leaving the Education system, she became employed with AT&T as a Business Consultant to small businesses throughout the CSRA. After AT&T relocated their company to Atlanta, she decided to remain in the Augusta area and pursue a career in Real Estate. This was a turning point in her life because she chose to do something totally different from what she had gone to college to become, an Educator. Elmyria began working as a Sales Agent for Charles Smith Realty, then Tracey Teasley Realty, Veteran Realty, and now here present company, Meybohm Realty.

She is presently a Vice President for the company and holds an Associate Broker's license. Elmyria oversees a sub-division development of waterfront and water access properties. This development is going to be one of the greatest undertakings in South Richmond County. It's being featured in The Maybohm Magazine, The Real Estate Book, and The Augusta Chronicle. She is truly proud and honored to be a part of bringing a Sub-division of this magnitude to South Augusta. The real estate field has afforded her the opportunity to help others as well as herself and her family to become home owners. Also, she and her husband own rental property, land, and commercial property throughout Augusta and surrounding areas.

Elmyria is married to Johnny Chivers, Jr. a retiree from the Military and Wackenhut Service Incorporation at Savannah River Site. They have four children: Byron, Omar, Eric, and Crystal. They also have five grandchildren.

Elmyria is very active at her church which is Harmony Baptist Church. She serves on the Trustee Board and works with the youth in her church. She works with Dreambuilders and the Student Ambassador program which assists youth in fulfilling their dreams to become productive in society. She is a member of a professional Investment Club in Augusta and is a member of the National Realtor Association, Georgia Association of Realtors, and South Carolina Association of Realtors.

General Meeting Information

Location:

North Augusta Community Center
495 Brookside Drive
North Augusta, SC

Cost:

\$15 per member
\$20 per non-member
Guests & Spouses are welcome!

Time:

Registration & Networking 5:30p
Dinner & Speaker 6:30p

PDU:

2 PDUs earned

RSVP:

No later than **August 20, 2012** to
Tambra Craven (tambra.craven@srs.gov)
Kathy Roberson (kathlene.roberson@srs.gov)



Vogtle Cost Overruns and Potential Delay

In a recent article, the Augusta Chronicle reveals that Plant Vogtle is facing more than \$950 million in cost overruns. The unresolved dispute over who is responsible for payment could potentially affect the new reactor completion schedule. "While the formal dispute resolution process has been initiated, Georgia Power expects negotiations with the contractor to continue over the next several months with respect to cost and schedule" stated Securities Exchange Commission, Southern Co. in their financial report.

In a related matter, DOE has no guarantee that they will issue a loan for Georgia Power (they are currently still in negotiations). If the loan is not issued or is not in the best interest of the company, Georgia Power will look through traditional capital markets for financing.

Pavey, Rob. "Dispute over added Vogtle costs moves ahead." Augusta Chronicle 14 Aug. 2012: n. pag. Web <<http://chronicle.augusta.com>>

This Month's Journal Spotlight

Cause and Effect: How Schedule Acceleration Affects Productivity, Matthew Christopher Baker, CCT, *Cost Engineering*, Vol. 54, No. 02, AACE International, Morgantown, WV, 2012

"Effective cost and schedule management are work in a world where our available time majority of projects experience schedule This article will elaborate on examples of impact the budget by making changes, covered in the original estimate. The of accelerating a construction schedule productivity. The included productivity increasing the hours worked per week has work performed because of the increased productivity in the field, increasing hours worked schedule as it increases cost and, therefore, has a
Obtained via the AACE International Virtual Library.



critical success factors for all projects. We and money is limited. Unfortunately, the slippage and subsequent cost overruns. how a project manager can negatively during construction, that are not examples discuss the 'pros and cons' and its effect on cost and schedule tables and diagrams illustrate that a drastic impact on the actual cost of overtime charges. Because of typical per week does not significantly improve minimal return on its investment."

AWARDS

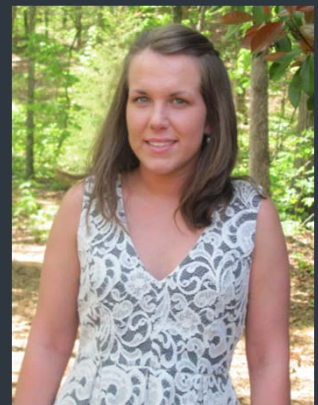
Section Award

AACEI-CSRA is proud to announce that we have been awarded the Gold Award for 2011-2012.



This is only possible thanks to our wonderful members. Please continue to let us know how we can better server you.

Scholarship Winner



AACEI-CSRA was proud to award the 2012 scholarship to

Errin Barnett,

a senior Construction Management major at Southern Polytechnic State University. She is recently completed a summer internship for Southern Company. She was recently inducted into Sigma Lambda Chi, an International Society of Construction since she is within the top 20 percent of her class. Her other organization memberships include the SPSU-KSU BCM, SPSU Student Chapter of ABC, and student membership of the ICC.



Calling All Papers!

Individuals interested in presenting a technical paper for consideration at the 2013 Annual Meeting, June 30-July 3, 2013 at the Marriott Wardman Park, must submit their abstract by August 31, 2012 as outlined on the AACE International website. Papers for the technical program are selected by the Technical Associate Board based on the submitted abstract, and, in the case of previous speakers, also on evaluations of prior presentations. In 2012, more than 330 abstracts were received by the Technical Board for approximately 100 presentations.

Certification and Exams

CCC/CCE Workshop

October 5 & 12, 2012 (Tentative)
Augusta State University

This course will enable attendees to be better prepared to take the Certification Examination beyond what they would likely achieve on their own. Professionals who attend this 2-day Certification Review Course are expected to be fairly well prepared to sit for the examination before arrival. This course is not intended to prepare a professional who routinely works in only one sub-element of cost engineering to pass the challenging Certification Examination, if they have done little study before the seminar. Attendees should have read and worked some problems in *Skills and Knowledge of Cost Engineering, 5th Ed* and *Certification Study Guide, 3rd Ed*, to become relatively comfortable with the contents of these books. They should also reacquaint themselves with college algebra, such as logarithms and exponents. Ideally, attendees would have completed, at some time in the past, a baccalaureate course in business or engineering statistics, as well as engineering economy or finance.

Mentorship Program

The structured, self-guided mentoring program promises to be a great opportunity for AACE International to accelerate the growth of the next generation of Association leaders while increasing the diversity of our profession and membership. AACE International has structured the mentoring program based upon best practices within the association community but also customized selected resources to be more accessible and relevant to members and the total cost management profession. Please visit www.aacei.org/career/mentor/ for more information.

2012-2013 Board of Directors



Brandon McBride
CCC, PMP
President



Tandra Craven
Programs Director



Gary Bunker
CCC
Membership Director



Stephen Gross
EVP
Vice President



Jim Hammond
EVP
Education Director



Myron Berry
CCC, PMP
Treasurer



Kathy Roberson
EVP
Past President



Blake Waller
Marketing Director



Sarah Mazul
Communications Director